



Killeen Security  
Products

1-800-KSP-KEYS  
[www.iccore.com](http://www.iccore.com)

Killeen Machine Tool Co., Inc.

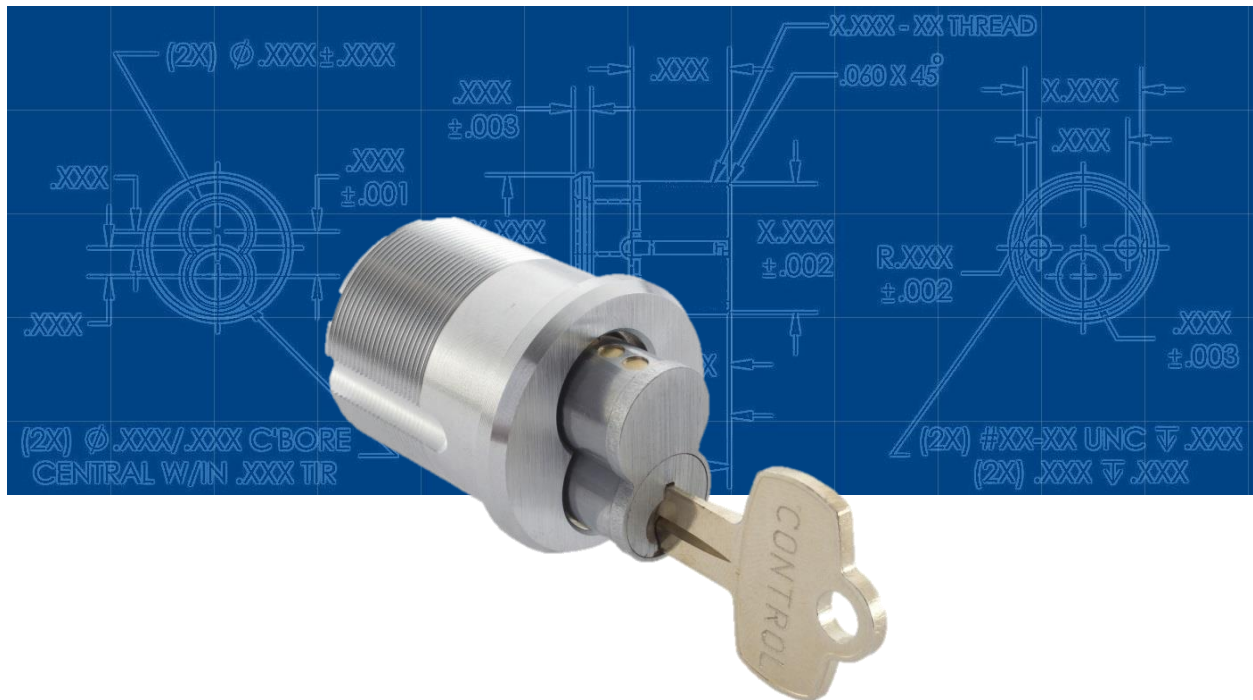
e-mail: [sales@iccore.com](mailto:sales@iccore.com)

33 Hermon Street

phone: 508-798-3200

Worcester, MA 01610

fax: 508-753-2183



At KSP, Customer Service is Second to None



Killeen Security Products



## **AT KSP, CUSTOMER SERVICE IS SECOND TO NONE!**

Located in Worcester, Massachusetts, Killeen Security Products (KSP), proudly manufactures Small Interchangeable Cores, Mortise and Rim Housings. All of our products have been made in the USA since 1983.

We manufacture over 15 different keyways for the Small Interchangeable Core products that are interchangeable with Best, Arrow, Falcon & GMS. We have key blanks available for every keyway we supply. KSP manufactures Mortise housings that have both the staked on and screw on cams available. Recently, we have added a convertible Mortise/Rim housing in the following styles: Medeco, Sargent, Schlage, Yale, Corbin Russwin, and our own KSP (SFIC). We supply locksmith tools such as capping blocks, housing wrenches, and staking tools.

KSP can assist your company in setting up keying systems providing the utmost security for your business. We can set up systems for all levels, from something as complex as a Great Grand Master Key system to something as simple as keying alike to a Control Key. We can combine cores to fit all of your needs and maintain these records for you. KSP is known for cores & housings but we also have the ability to assist our customers with custom applications. If you have a special project, please give us a call. We would welcome any opportunity to be of assistance.



Quality – Price – Delivery That's what KSP is all about!

E-mail us: [sales@icore.com](mailto:sales@icore.com)

# Interchangeable Core Products

## Table of Contents

Cores – Uncombined	3
Cores – Combined	4
Mortise Housings	5 - 6
Rim Housings	7
Spacers and Collars	7
408 Convertible Housings	8-9
Schlage LFIC Mortise Housings	10
Schlage LFIC Rim Housings	12
I/C Core Pin Kits	12
I/C Core Pin, Caps, Springs	12
K-Series Cam Kit	13
I/C Housings Drive Pins	13
I/C Tools	14
I/C Brass Padlocks	14

1-800-ksp-keys [www.iccore.com](http://www.iccore.com)

E-mail us: [sales@iccore.com](mailto:sales@iccore.com)



## Interchangeable Core Locks

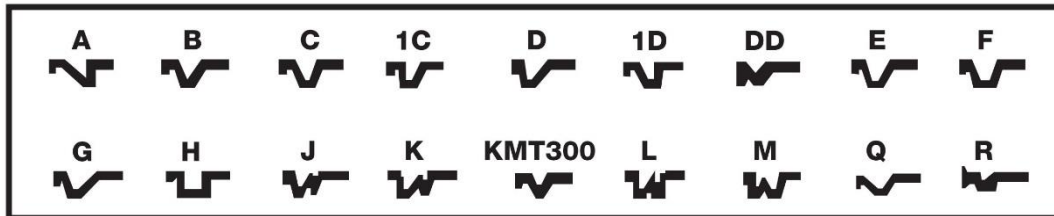
Special finishes available. Contact us for pricing and lead-times.



### Cores - Uncombined

Part Number	Description	Keyway	Finish
206	6 Pin	X	4 / 26D
207	7 Pin	X	4 / 26D

Order Example: 206-A-26D



Above cores are also available in Slide Cap (FALCON style cores)



SFIC Example

### Slide Cap (Falcon Style Core – Uncombined)

Available in the same keyways and finishes as our best style cores.

Order Example: 207SC-L-04



### Cores – Sliding Glass / Showcase Lock

Part Number	Description	Keyway	Finish
207SPL	7 Pin	X	US04 / 26D

Available in all keyways. Cores only.



SPL Example



Quality – Price – Delivery That's what KSP is all about!

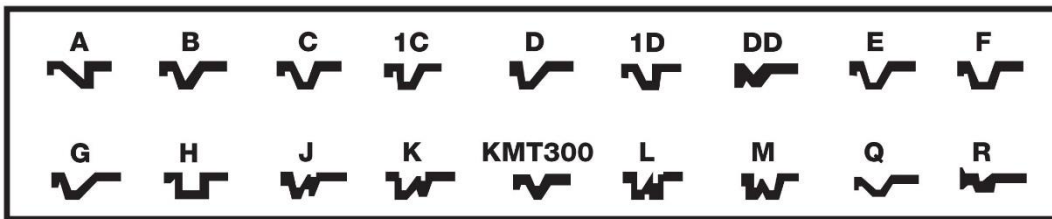
E-mail us: [sales@iccore.com](mailto:sales@iccore.com)

# Interchangeable Core Products

## Cores - Combined

Part Number	Description	Keyway	Finish
206	6 Pin	X	4 / 26D
207	7 Pin	X	4 / 26D

Order Example: 206-A-26D Combined



Core Housing Assembly

## Key Blanks

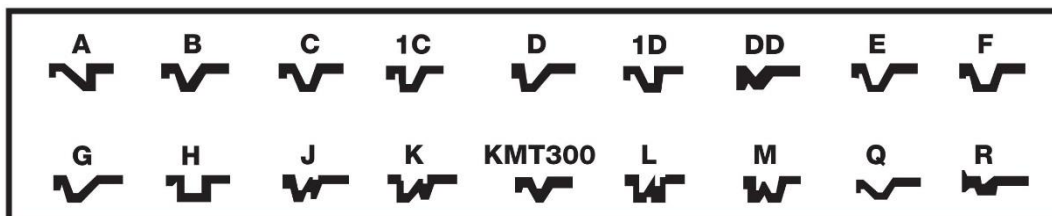
Part Number

400K-(Keyway)



Key Blank Samples

Order Example: 400K-A, 400K-B, etc.



1-800-ksp-keys [www.iccore.com](http://www.iccore.com)

E-mail us: [sales@iccore.com](mailto:sales@iccore.com)





Killeen Security Products

## Housings SFIC

Special finishes available. Contact us for pricing and lead-times.

### Mortise Housings with Staked-on Cams

Part Number	Length	Description
306	1-1/4"	6 Pin Mortise Housing
307	1-3/8"	6/7 Pin Mortise Housing
307 Long	1-3/4"	6/7 Pin Mortise Housing
316		6 Pin Tapered Head Housing
317		6/7 Pin Tapered Head Housing

### Available Finishes

03	Bright Brass
04	Satin Brass
10	Satin Bronze
10B	Duro
26	Bright Chrome
26D	Satin Chrome



### Staked-on Housing Cams (Sold in bags of 20)

Part Number	Description
600	Standard Cam
601	Adams Rite Cam
602	Clover Cam
602-S	Sargent Cam
602-L	Schlage Cam



Quality – Price – Delivery That's what KSP is all about!

E-mail us: [sales@iccore.com](mailto:sales@iccore.com)

# Interchangeable Core Products

## Mortise Housings for Screw-on Cams

Part Number	Length	Description
406	1-1/4"	6 Pin Mortise Housing
407	1-3/8"	6/7 Pin Mortise Housing
407 Long	1-3/4"	6/7 Pin Mortise Housing
416		6 Pin Tapered Head Housing
417		6/7 Pin Tapered Head Housing

## Available Finishes

03	Bright Brass
04	Satin Brass
10	Satin Bronze
10B	Duro
26	Bright Chrome
26D	Satin Chrome



## Screw-on Housing Cams

(Sold in bags of 20)

Part Number	Description
K700	Standard Cam
K701	Adams Rite Cam
K702	Clover Cam
K702-S	Sargent Cam
K702-L	Schlage Cam



1-800-ksp-keys [www.iccore.com](http://www.iccore.com)

E-mail us: [sales@iccore.com](mailto:sales@iccore.com)



## Rim Housings

Part Number	Description
308	6/7 Pin Rim Housing
308-6	6 Pin Housing



308 Rim Housing 26D Finish

## Available Finishes

03	Bright Brass
04	Satin Brass
10	Satin Bronze
10B	Duro
26	Bright Chrome
26D	Satin Chrome



503-26D

## Spacers and Collars

Part Number	Description	Size
500	Rim	
501	Step Mortise	1/8" – 1/4"
502	Solid Collar	1/8" – 1/4" – 3/8"
503-26D	Solid Tapered Collar	3/16" Spacer
400-CA-26D	Hardened Spring Collar	

(400-CA-26D)

## Available Finishes

03	Bright Brass
10	Satin Bronze
10B	Duro
26D	Satin Chrome



Quality – Price – Delivery That's what KSP is all about!

E-mail us: [sales@iccore.com](mailto:sales@iccore.com)



# Interchangeable Core Products

## 408 Convertible Housings

### 408 Convertible Housing Rim and Mortise Function in one!

All Housings Less Cam

- Eliminate excess inventory and SKU's
- Provides for flexibility
- No need to disassemble drive assembly
- Compatible with these LFIC & SFIC cores (individually boxed)



408 with Tailpiece

Manufacturer	Part Number	Length
Sargent	P/N 408 Sargent (finish)	1.24"
Schlage	P/N 408 Schlage (finish)	1.37"
Medeco	P/N 408 Medeco (finish)	1.22"
Corbin Russwin	P/N 408 Corbin Russwin (finish)	1.12"
Yale	P/N 408 Yale (finish)	1.40"
KSP (SFIC)	P/N 408 KSP (finish)	1.24"



408 with Cam

Compatible with **Best, Arrow, Falcon, GMS**



408 Housing with Hardware

### Extra 408 Hardware Kit

**408-CB-Extra:** Tailpiece, Adapter and Screws (Rim Function), Collars, Back Plate, Break-away Screws – Individually Wrapped

### K-Series Cam Pack

Part Number **CKS-5**

1 each – **K700, K701, K207, K702S, K702L**



K700

K701

K702

K702S

K702L



1-800-ksp-keys [www.iccore.com](http://www.iccore.com)

E-mail us: [sales@iccore.com](mailto:sales@iccore.com)

## 408 Convertible Housing Kit

All Housings Less Cam

### Convertible Housings

- Eliminate excess inventory and SKU's
- Provides for flexibility
- No need to disassemble drive assembly
- Designed with the locksmith in mind



408 Housing Kit

### Contents:

- Qty. 6, 408 Housing, Choose from SFIC, Schlage, Sargent, Corbin Russwin, Yale, and Medeco styles
- Qty. 6 each cam: K700, K701, K702, K702S, K702L
- Screws for assembling tailpiece or cam, with Loctite pre-applied
- Qty. 3 Tailpieces, Adapter (patent pending), for rim installation
- Qty. 3 sets of breakaway screws and back plates of trim installation
- Miscellaneous Collars



408 with Tailpiece



408 with Cam



SFIC



Schlage



Sargent



Corbin Russwin



Yale



Medeco



Quality – Price – Delivery That's what KSP is all about!

E-mail us: [sales@iccore.com](mailto:sales@iccore.com)

# Interchangeable Core Products

## Housings Schlage

### Schlage LFIC Mortise Housings

All Housings Less Cam

Part Number	Description
407-LFIC	Large format mortise cylinder housings



407-LFIC-04 (front view)

### Available Finishes

03	Bright Brass
04	Satin Brass
10	Satin Bronze
10B	Duro
26	Bright Chrome
26D	Satin Chrome



407-LFIC-04 (back view)

### Screw-on Housing Cams

Part Number	Description
K700	Standard Cam
K701	Adams Rite Cam
K702	Clover Cam
K702-S	Sargent Cam
K702-L	Schlage Cam



K700    K701    K702    K702-S    K702-L

(Each Cam sold in bags of 10)

1-800-ksp-keys    [www.iccore.com](http://www.iccore.com)

E-mail us: [sales@iccore.com](mailto:sales@iccore.com)



## Schlage LFIC Rim Housings

All Housings Less Cam

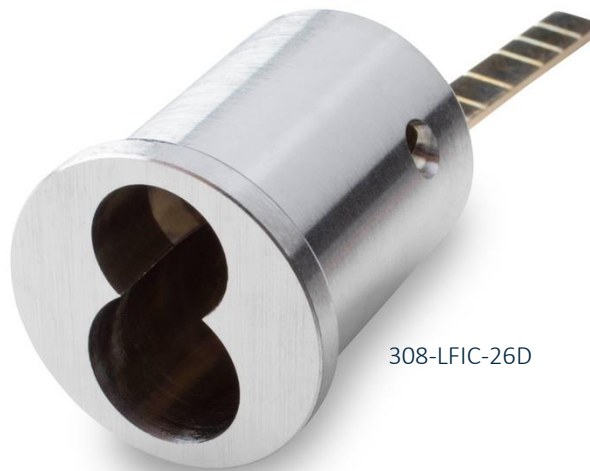
Part Number	Description
308-LFIC	Large format mortise cylinder housings

### Available Finishes

03	Bright Brass
04	Satin Brass
10	Satin Bronze
10B	Duro
26	Bright Chrome
26D	Satin Chrome



308-LFIC-04



308-LFIC-26D



Quality – Price – Delivery That’s what KSP is all about!

E-mail us: [sales@iccore.com](mailto:sales@iccore.com)

# Interchangeable Core Products

## Interchangeable Lock Core Accessories

### I/C Core Pin Kits

Part Number

A2-Kit



Pin Kit

### I/C Core Pin, Caps, Springs

Part Description

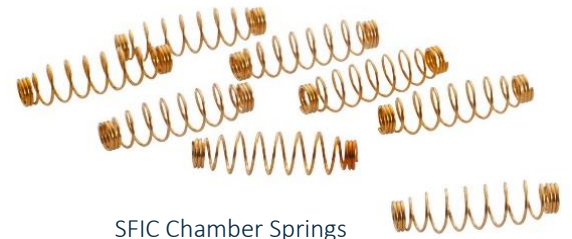
Quantity

0.108 Diameter

1000 / Pack Only



A2 Top Pins



SFIC Chamber Springs



A2 Bottom Pins

1-800-ksp-keys [www.iccore.com](http://www.iccore.com)

E-mail us: [sales@iccore.com](mailto:sales@iccore.com)



## K-Series Cam Kit

Part Number: K7CAMKIT

Description: Cam Kit with various cams and accessories

Includes the following:

Qty. 10 ---K700 screw-on cams

Qty. 10 ---K701 screw-on cams

Qty. 10 ---K702 screw-on cams

Qty. 10 ---K702S screw-on cams

Qty. 10 ---K702L screw-on cams



K-Series Cam Kit

100 pcs --- Cam Screws (pre-applied Loctite)

Variety of solid spacers

Variety of step spacers

SFIC Turn Knob

## I/C Housings Drive Pins

Part Number	Description	Quantity
603	Studs	100 / pack
604	Small Spacer	100 / pack
605	Large Spacer	100 / pack



Quality – Price – Delivery That’s what KSP is all about!

E-mail us: [sales@iccore.com](mailto:sales@iccore.com)

# Interchangeable Core Products

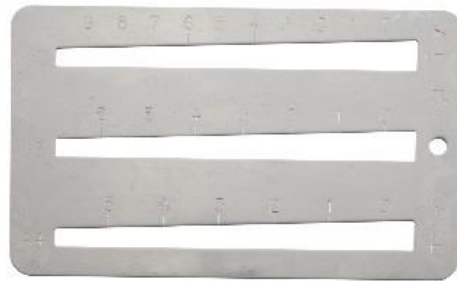
## I/C Tools

Part Number	Description
309	SFIC Core Turn Knob
606	Capping Block & Punch
608	Staking Tool
609	SFIC Housing Wrench
610	Ejector Punch
611	Y Cut – Decoding Gauge – A2, A3, A4
614	Capping Strips

For new A1 style Security Capping Press



610



611



614

## I/C Brass Padlocks

Part Number	Shackle Diameter	Shackle Length
801	5/16"	1-1/8"
802	5/16"	2"
803	5/16"	3"
804	5/16"	4"



3"

2"

1-1/8"

4"

1-800-ksp-keys [www.iccore.com](http://www.iccore.com)

E-mail us: [sales@iccore.com](mailto:sales@iccore.com)





**Killeen Security**

**1-800-KSP-KEYS**

**Products**

**[www.iccore.com](http://www.iccore.com)**

Killeen Machine Tool Co., Inc.

e-mail: [sales@iccore.com](mailto:sales@iccore.com)

33 Hermon Street

phone: 508-798-3200

Worcester, MA 01610

fax: 508-753-2183

## About Us

In 1983, Norman Doucet brought Doug Maston on board and created KSP. Within a year of its concept, KSP shipped its first order. Now, over 35 years later, KSP has built a strong reputation in the security industry and its products can be found all over the world. Both Norman and Doug have since passed away, but we believe that they would be proud of the legacy left behind.

Whatever levels of complexity your business requires, our security and satisfaction are our foremost concerns.



**Gene Degre**

*President*

*Killeen Security Products*



**Karen Zawalich**

*Sales & Marketing*

*Killeen Security Products*



1-800-ksp-keys [www.iccore.com](http://www.iccore.com)

E-mail us: [sales@iccore.com](mailto:sales@iccore.com)