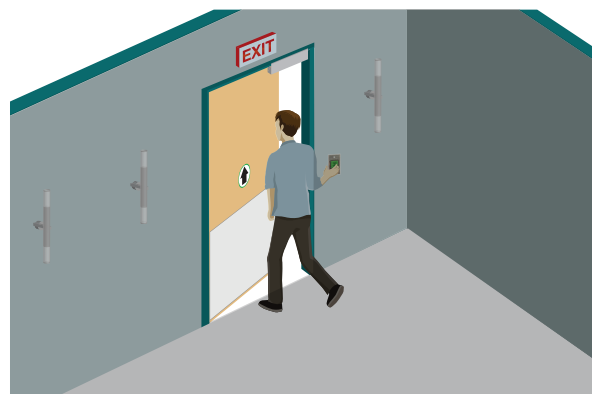


# ACCESS CONTROL PUSH BUTTON

ILLUMINATED, PUSH TO EXIT BUTTON



## PRIMARY APPLICATIONS



## DESCRIPTION

BEA's illuminated Access Control Push Button is part of the portfolio of request to exit products, including presence sensors, power supplies, ruggedized pneumatic push buttons, heavy duty piezo buttons, access keypads, a complete range of maglocks and other peripheral devices.

BEA's Access Control Push Button is an illuminated access control solution, including a stainless steel faceplate and brightly lit plastic button. It is appropriate for most indoor and low ambient light applications.

## FEATURES & BENEFITS

- Illumination can be adjusted to bright or low light for improved visibility in poorly lit areas
- Easily replaced 12/14 light bulb, reducing whole-product replacement
- Stainless steel faceplate
- Vandal/tamper resistant design
- Tested to perform greater than 1 million operations



BEA, Inc.  
RIDC Park West  
100 Enterprise Drive  
Pittsburgh, PA 15275-1213

Customer Service: 800.523.2462  
Technical Support: 800.407.4545  
www.BEAinc.com

RELATED REQUEST TO EXIT PRODUCTS



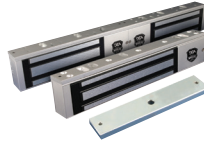
R2E-100



FLY KIT



BR3 LOGIC MODULE



MAGLOCKS



ELECTRIC STRIKES



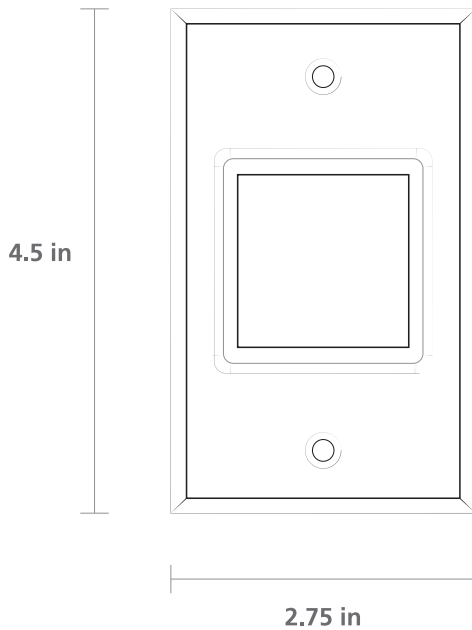
POWER SUPPLIES

TECHNICAL SPECIFICATIONS

<b>Technology</b>	Mechanical switch and light socket in modular style component
<b>Faceplate Dimensions</b>	Single Gang - 2.75 in x 4.5 in
<b>Visual Style</b>	Illuminated Green button that signals activation, which can also be disabled
<b>Materials</b>	Stainless steel faceplate with tamper-resistant screws
<b>Input Power</b>	10 A at 125/250 VAC
<b>Time Range</b>	Momentary switch, no delay
<b>Bulb Power</b>	High Volt Bulb: 60 mA at 24 VDC (P/N C656) Low Volt Bulb: 190 mA at 12VDC (P/N CM-161)
<b>Relay</b>	SPDT, color coded wiring (Open/Closed)
<b>Operating Temperature</b>	-17°F to 120°F
<b>Product Life Test</b>	1 million operations

DIMENSIONAL DRAWINGS

FRONT



ACCESS CONTROL PUSH BUTTON SERIES



10ACPBSS1  
SINGLE,  
TEXT ONLY



10BOX24SGSM  
STANDARD  
SURFACE MOUNT

