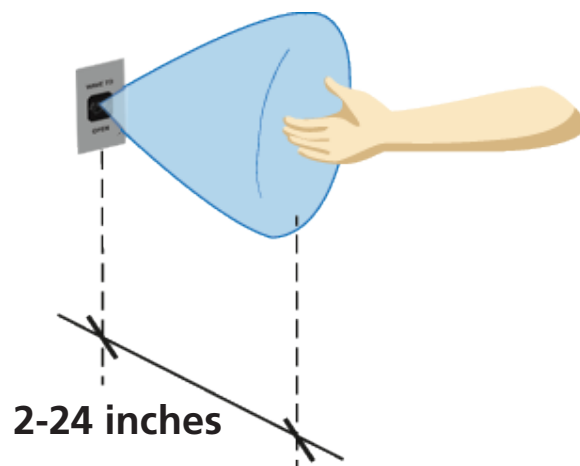


# MAGIC SWITCH: MS11

## ADJUSTABLE RANGE, STAINLESS STEEL TOUCHLESS ACTUATOR



### PRIMARY APPLICATIONS



### DESCRIPTION

BEA's MS11 is an aesthetically pleasing, touchless activation device designed to reduce the spread of germs and improve accessibility in healthcare, retail, industrial and commercial settings. The MS11 has been purpose-built to withstand the extreme rigors of fast-paced and sanitary environments.

The flush-mount MS11 is a durable stainless steel device utilizing adjustable-range microwave technology. The MS11's illuminated center and audible signaling confirms activation and encourages proper touchless use.

The MS11 detects moving objects such as a hand, cart or wheelchair and is designed for use in hospitals, pharmacies, clean rooms, food service and other areas needing highly accessible and germ-free activation.

### FEATURES & BENEFITS

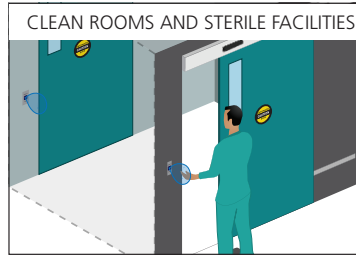
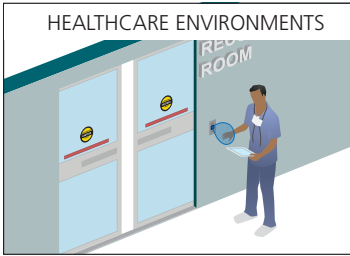
- NEMA 4 (IP65) enclosure capable of use in industrial and extreme washdown environments
- Illuminated blue center changes to green upon signal reception/activation
- Adjustable sensing zone from 2 to 24 inches (pulse or toggle)
- Adjustable audible alert setting, including silent-mode required for hospitals and other noise-sensitive environments
- Configurable output hold time of 1 to 30 seconds allowing unique, user-defined device placement
- Inter-operates with all automatic door control makes and models



BEA, Inc.  
RIDC Park West  
100 Enterprise Drive  
Pittsburgh, PA 15275-1213

Customer Service: 800.523.2462  
Technical Support: 800.407.4545  
www.BEAinc.com

## APPLICATIONS



## TECHNICAL SPECIFICATIONS

<b>Technology</b>	Microwave Doppler Radar
<b>Detection Mode</b>	Motion (bidirectional), Toggle or Timed Mode
<b>Sensing Zone **</b>	2 to 24 inches (adjustable)
<b>Hold Time</b>	1 to 30 s
<b>Alert Settings</b>	
Audible Alert	Silent Mode or Signal Mode
Visual Alert	Blue (Standby) Green (Activation)
<b>Supply Voltage</b>	12-24 V AC/DC or +5 VDC
<b>Current Consumption</b>	< 2.8W
<b>Temperature Range</b>	-22° F to 158° F
<b>Enclosure Rating</b>	NEMA 4 / IP65
<b>Relay</b>	1-Form C Solid State Relay 1A 30VAC/VDC (max)
<b>Dimensions (Overall)</b>	Single Gang: 4.5 in x 2.75 in x 0.98 in Double Gang: 4.5 in x 4.5 in x 0.98 in Jamb: 4.5 in x 1.68 in x 0.98 in
<b>Wire Harness Length</b>	12 inches
<b>Material</b>	Stainless Steel (faceplate)/ ABS (center)

\*\* See User's Guide

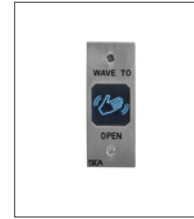
## DIMENSIONAL DRAWINGS



## PRODUCT FAMILY



**10MS11S**  
STAINLESS STEEL  
SINGLE GANG



**10MS11J**  
STAINLESS STEEL  
JAMB STYLE



**10MS11D**  
STAINLESS STEEL  
DOUBLE GANG

## RELATED PRODUCTS



**MS08 SERIES**  
STANDARD  
MICROWAVE  
ACTUATOR



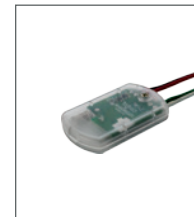
**MS09 SERIES**  
INDUSTRIAL  
MICROWAVE  
ACTUATOR



**MS21H SERIES**  
SHORT-RANGE  
STAINLESS STEEL  
ACTUATOR



**900 MHZ WIRELESS**  
TRANSMITTERS  
AND RECEIVERS



**TD900RT**  
900 MHZ RETROFIT  
TRANSMITTER

[www.BEAinc.com](http://www.BEAinc.com)

© 2016 BEA, Inc. All rights reserved.

**MAGIC SWITCH: MS11** ADJUSTABLE RANGE, STAINLESS STEEL TOUCHLESS ACTUATOR

BEA, Inc.  
RIDC Park West  
100 Enterprise Drive  
Pittsburgh, PA 15275-1213

Customer Service: 800.523.2462  
Technical Support: 800.407.4545

