

PNEUMATIC PUSH BUTTONS

ADJUSTABLE TIME DELAY SECURITY BUTTON



PRIMARY APPLICATIONS



SHOWN ABOVE:
SINGLE STYLE WITH RED AND GREEN 2" BUTTON
JAMB STYLE WITH BLUE 1 5/8" BUTTON



DESCRIPTION

BEA's Pneumatic Push Buttons are ruggedized, including stainless steel faceplates and colored, anodized aluminum buttons, appropriate for most indoor applications.

The device is uniquely designed to minimize the number of moving parts, in turn reducing the wear and tear of the button and extending the life of the device.

Upon activation, the user-defined time delay initiates without additional mechanical action or the need of external power.

FEATURES & BENEFITS

- Adjustable time delay of 2 to 60 seconds
- Listed UL 508/ CSA C22.2 No 14-10 with MET LABS, File #E113051
- Available in single and jamb size plates
- Buttons available in 1 5/8 inch (standard) or 2 inch (large) sizes
- Available in a variety of combinations of color, text and logo upon request
- Tested to perform greater than 1 million operations



BEA, Inc.
RIDC Park West
100 Enterprise Drive
Pittsburgh, PA 15275-1213

Customer Service: 800.523.2462
Technical Support: 800.407.4545
www.BEAinc.com

RELATED REQUEST TO EXIT PRODUCTS



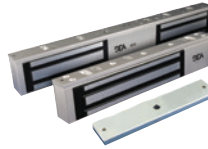
R2E-100



FLY KIT



BR3 LOGIC MODULE



MAGLOCKS



ELECTRIC STRIKES

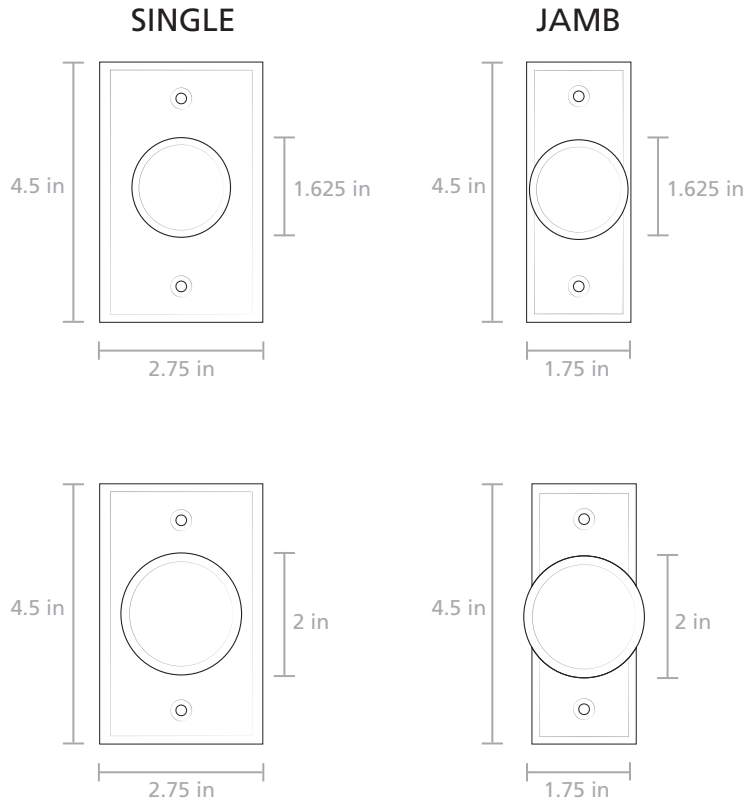


POWER SUPPLIES

TECHNICAL SPECIFICATIONS

Technology	Pneumatic
Faceplate Dimensions	
Single	2.75 in x 4.5 in
Jamb	1.75 in x 4.5 in
Visual Style	
	Red Button with Push to Exit Text
	Blue Button with Handicap Logo
	Green Button with Push to Exit Text
Materials	Stainless steel faceplate with colored, anodized aluminum button
Switch Rating	5 A at 125 VAC
Time Range	2 to 60 seconds, adjustable
Relative Timing Accuracy	+/- 5% @ 72°F
Contactors	NO or NC
Operating Temperature	Rated for indoor use only -15°F to 120°F
Product Life Test	1 million operations

DIMENSIONAL DRAWINGS



RELATED PRODUCTS



10ACPBDA1
2" JAMB,
TEXT ONLY



10ACPBDA2
2" SINGLE,
TEXT ONLY



10ACPBDA3
1 5/8" JAMB,
TEXT ONLY



10ACPBDA4
1 5/8" SINGLE,
TEXT ONLY



10ACPBDA5
2" JAMB,
LOGO ONLY



10ACPBDA6
2" SINGLE,
LOGO ONLY



10ACPBDA7
1 5/8" JAMB,
LOGO ONLY



10ACPBDA8
1 5/8" SINGLE,
LOGO ONLY



10ACPBDA9
2" JAMB,
TEXT ONLY



10ACPBDA10
2" SINGLE,
TEXT ONLY



10ACPBDA11
1 5/8" JAMB,
TEXT ONLY



10ACPBDA12
1 5/8" SINGLE,
TEXT ONLY



10BOX24SGSM
STANDARD
SURFACE MOUNT



10BOXJAMBST
JAMB
SURFACE MOUNT

