

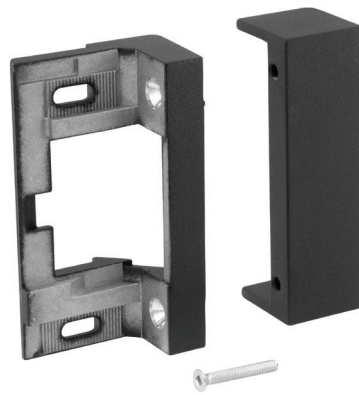
INSTALLATION

Electric Strike Lip Bracket Extensions For 4, 6, 7 Series Electric Strikes

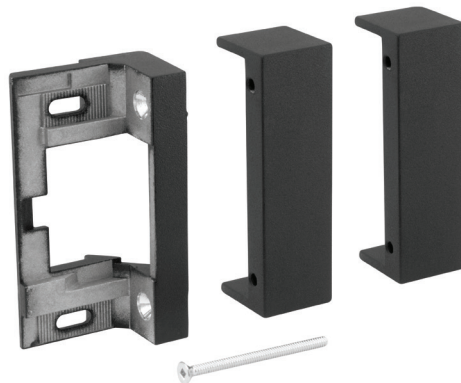


In or Out... we make it Easy!®

Extension Mounting Instructions For Center-Hung Doors or Deep-Reveal Frames



1" Extension
#6-32 x 1" Screws



2" Extension
#6-32 x 2" Screws



3" Extension
#6-32 x 3" Screws

NOTE: These 6 Series Low Profile photos show how the extensions mount.
The strike lip bracket will look slightly different on the Standard Profile 6 and the 4/7 series.